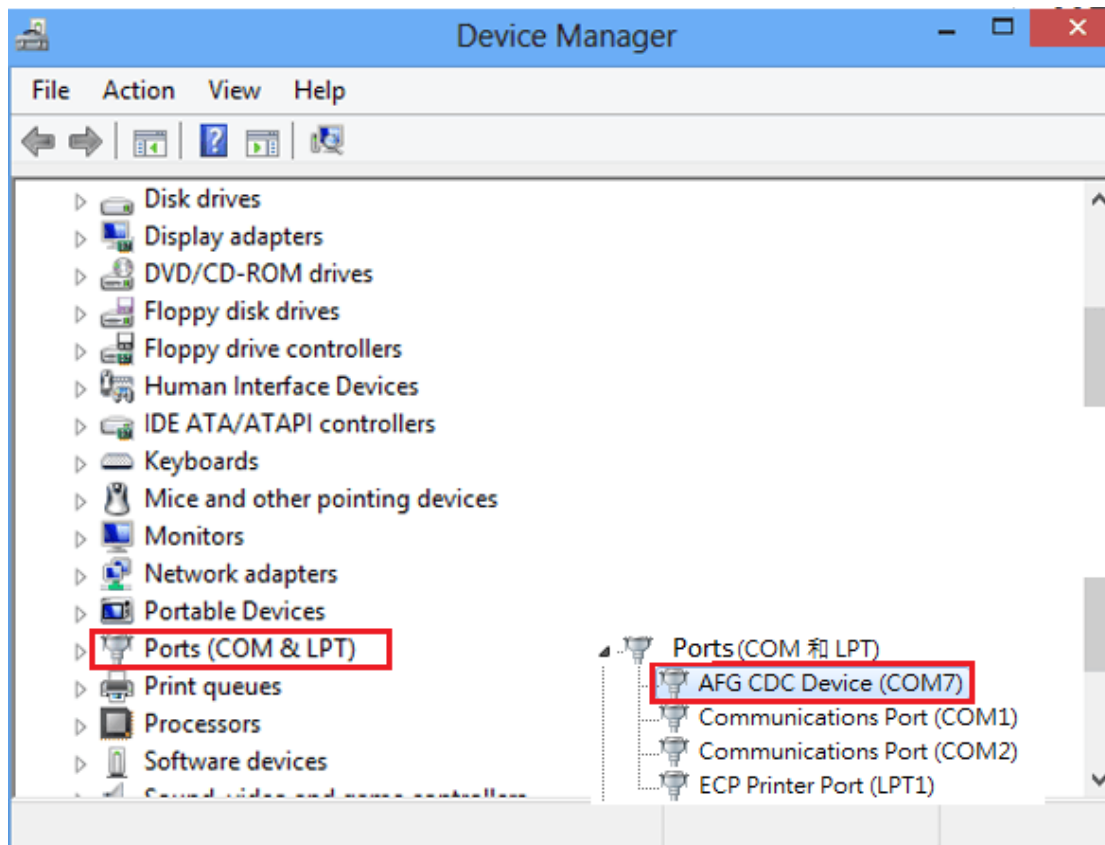


# How to use ARB Editing Software?

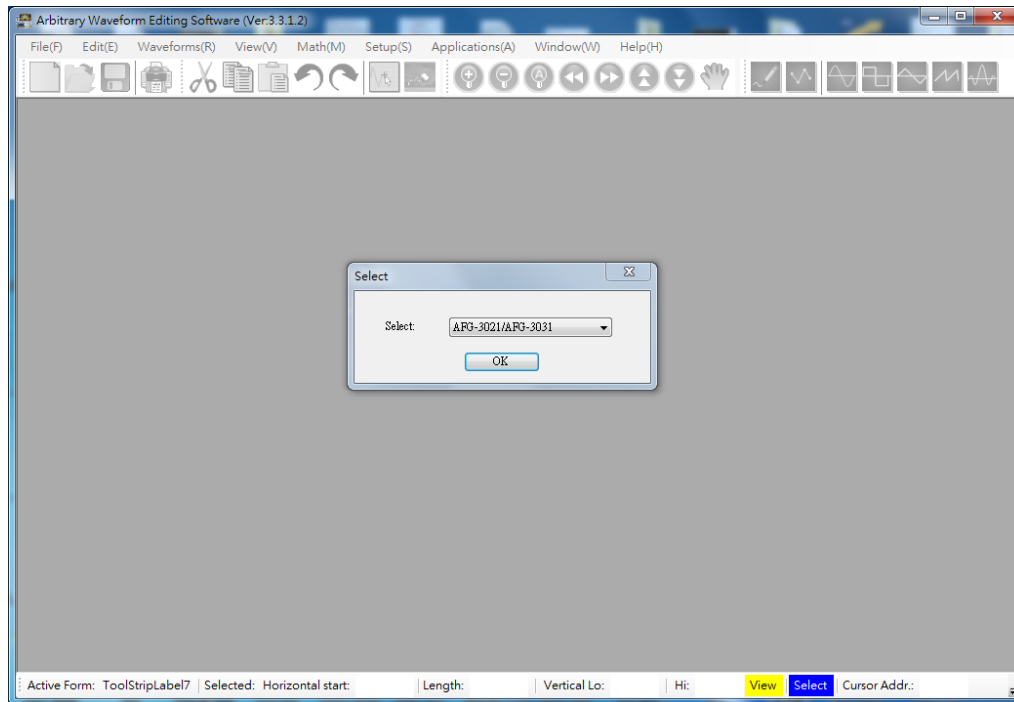
## A. Connection

1. Please execute the Device Manager  
(Route: Windows>computer>Device Manager)

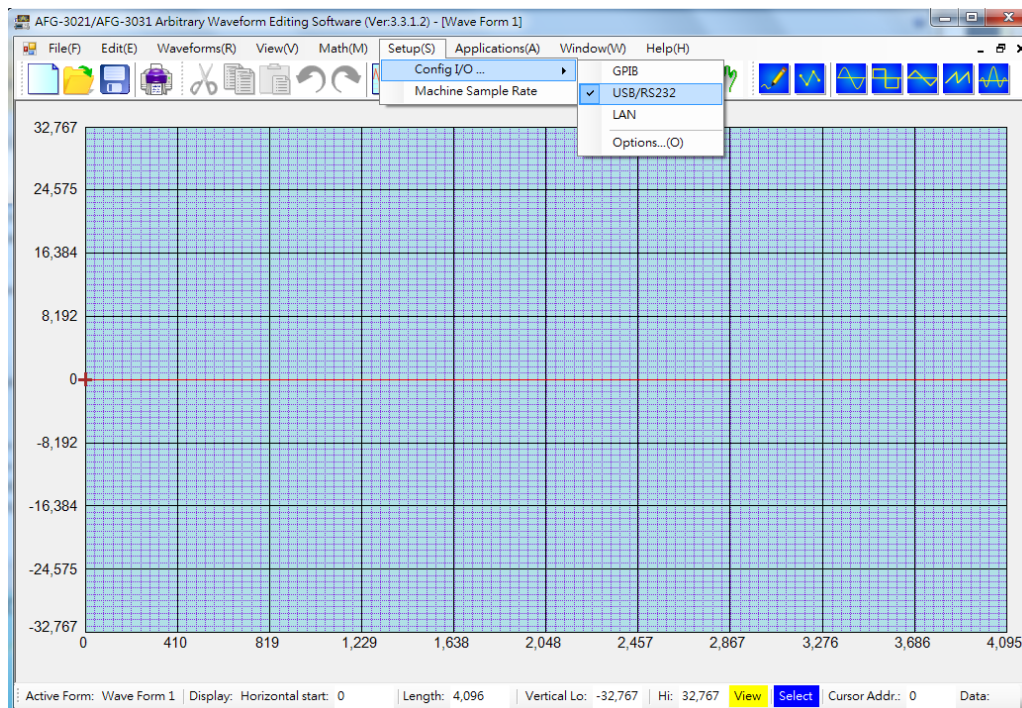
2. Check the com ports



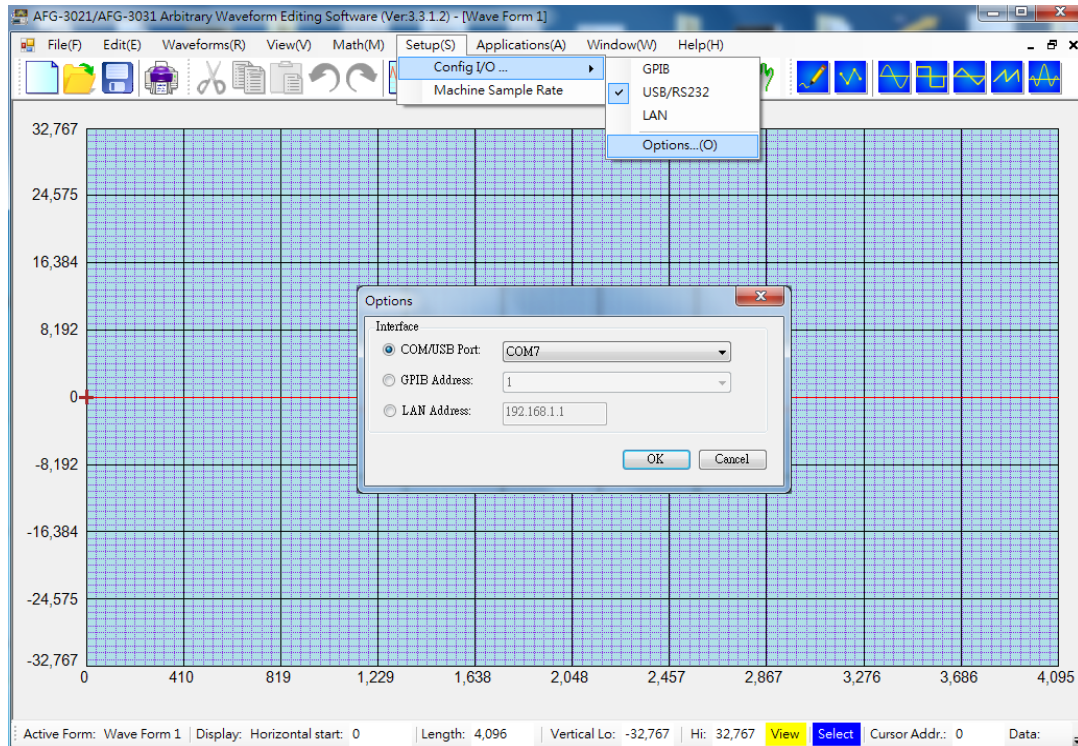
### 3. Open the Arb Waveform Editing Software



### 4. Set the interface that you use (GPIB,USB,LAN)

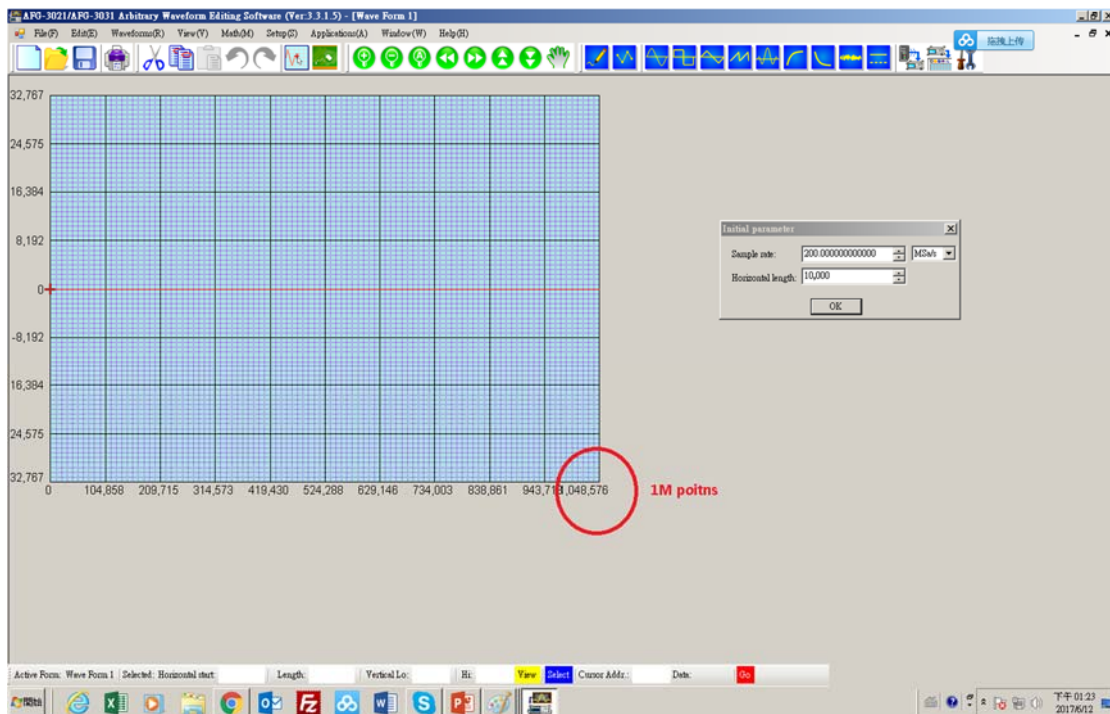
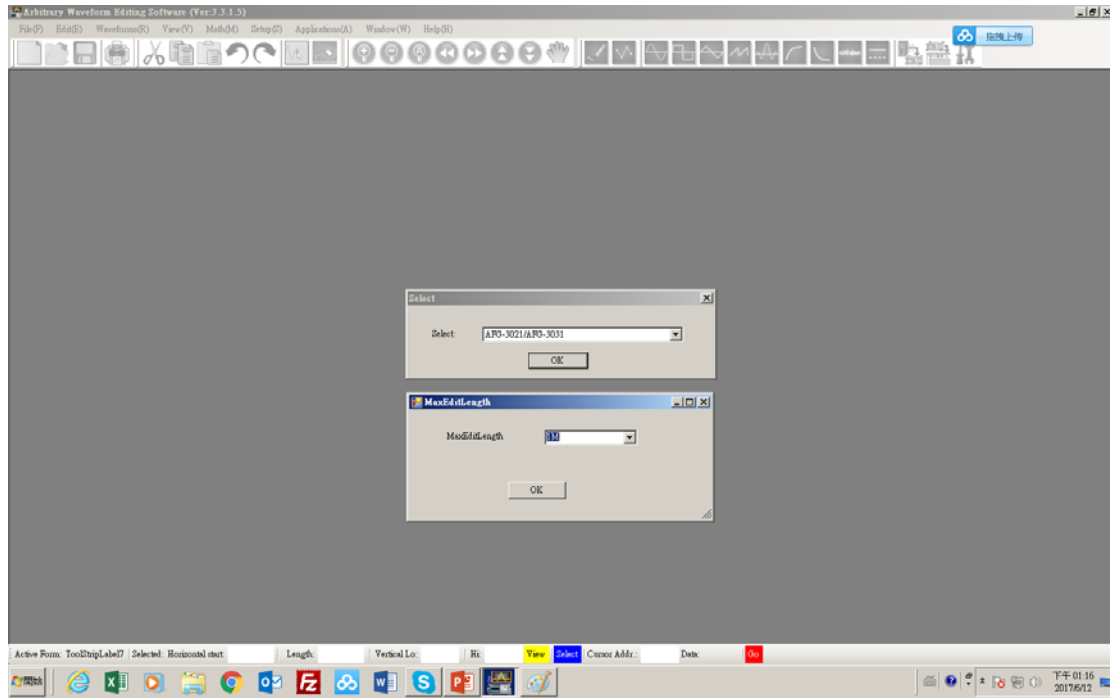


5. Check the com port again  
(Route: Setup> Config I/O>Option)  
(EX :My AFG-CDC is COM7)

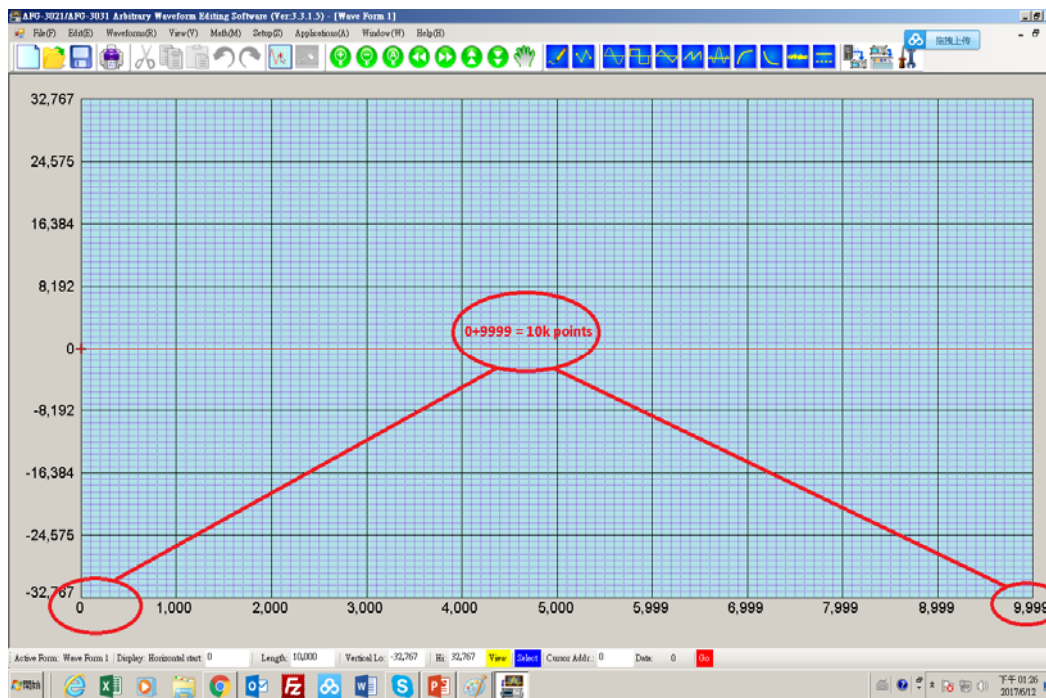
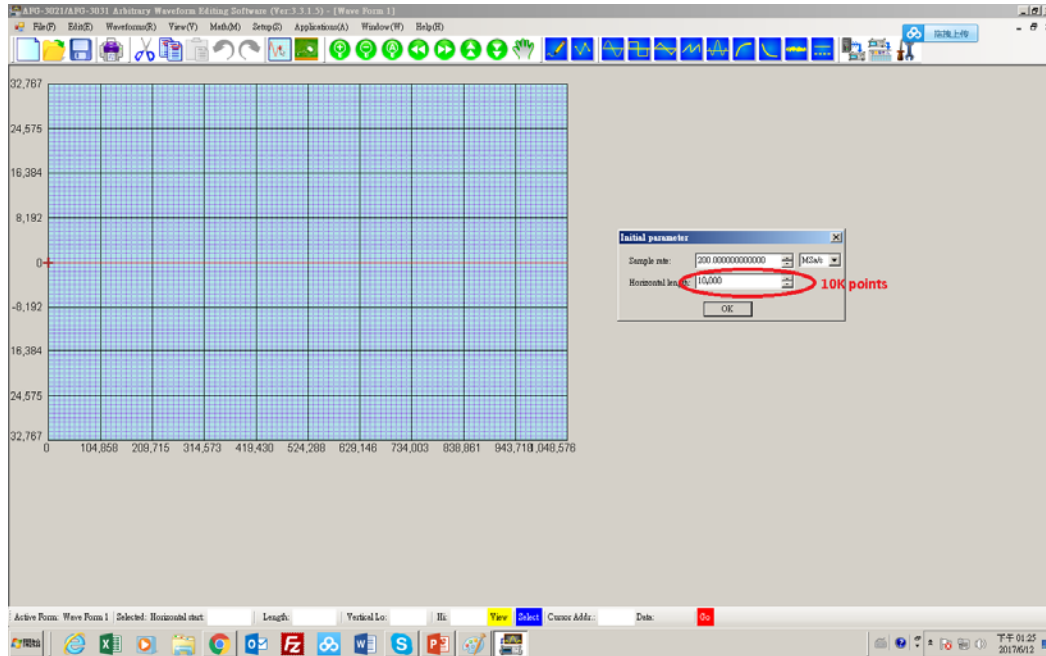


# B. Edit

## 1. MaxEditLength means the max waveform length



2. After Step 1 ,The pop-up window will show the parameter.  
You can set the sample rate and the horizontal length.  
If you set the horizontal length to 10k, it will zoom in to 10k points.(ex.)  
But the max length is still 1M.

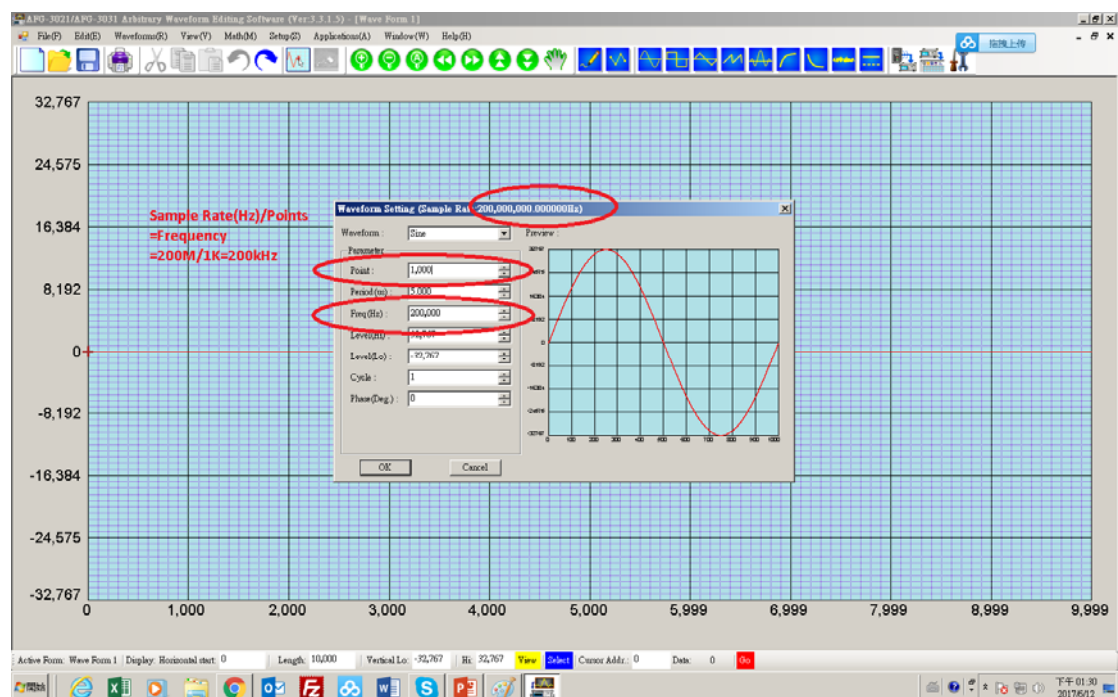
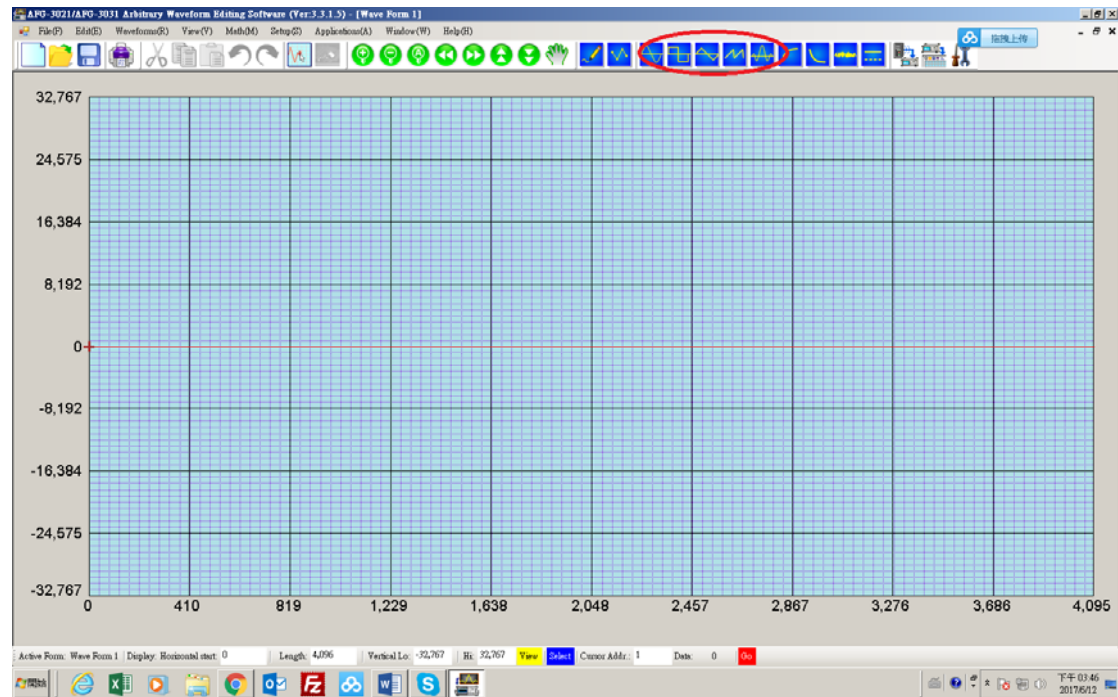


### 3. The basic waveform.

If you want to create a basic waveform, every settings will change by key-in.

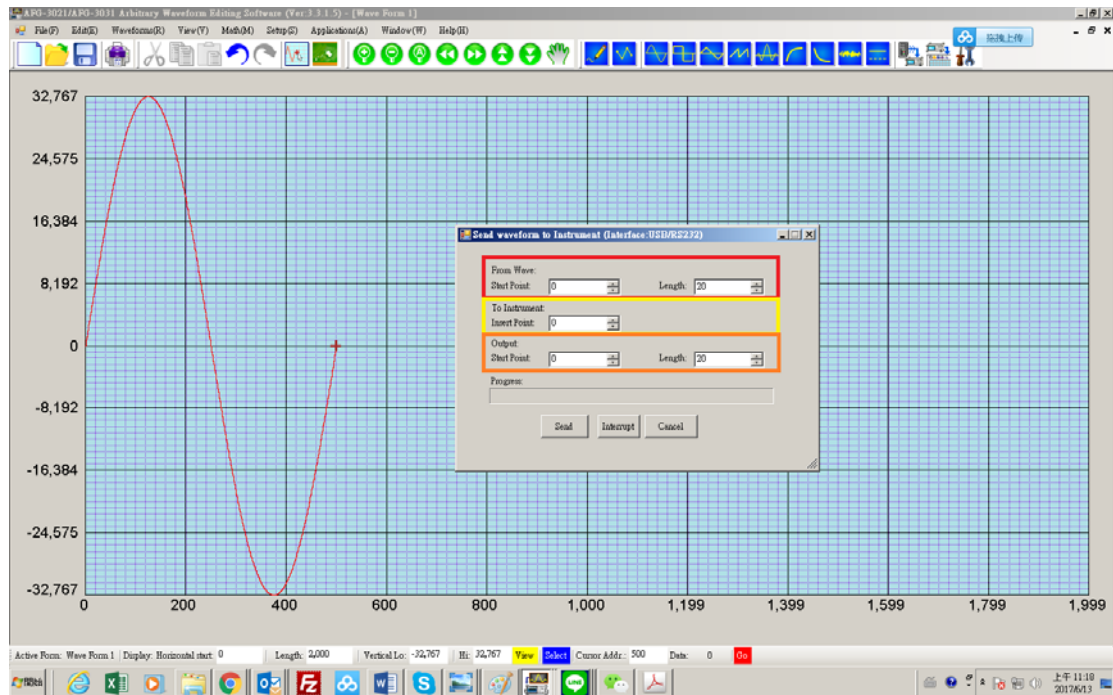
Sample Rate(Hz)/points=Frequency , 200MHz/1k = 200kHz

But it means the sine wave is 200k not the output .



#### 4. Set the waveform to instrument

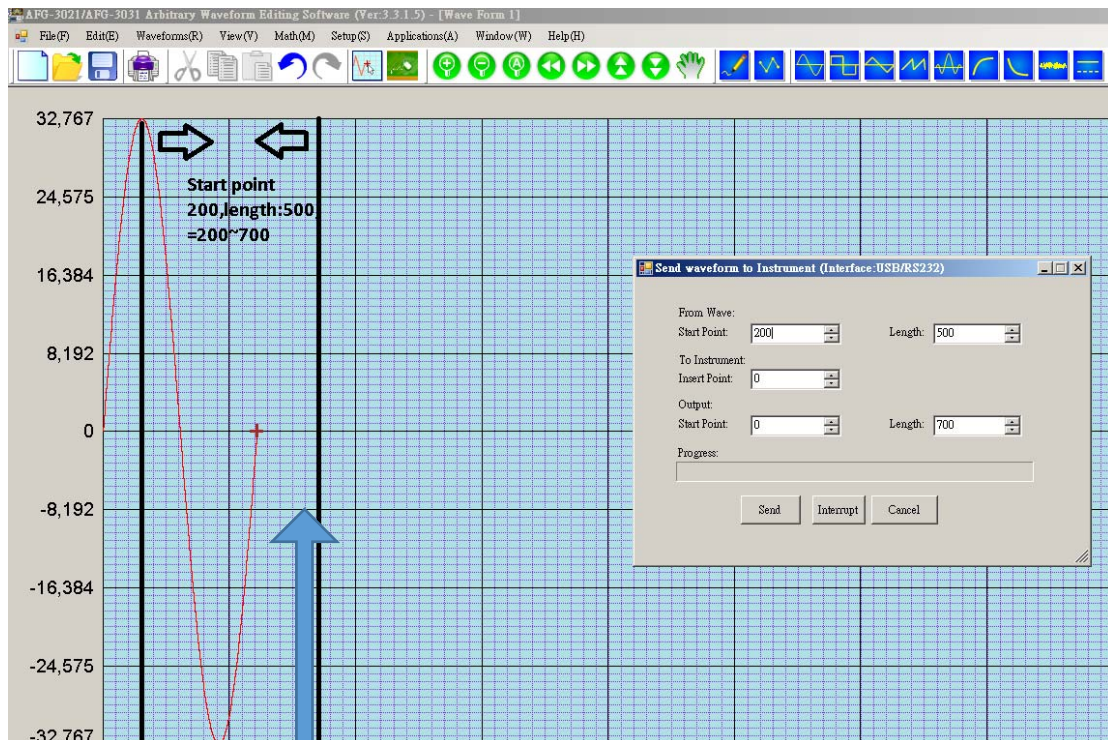
- (1) **From wave**: It means which part of waveform that you want to select.
- (2) **To instrument**: It means the start point of instrument .
- (3) **Output**: It means the output range. The frequency is also decided by the points.  $\text{Sample Rate(Hz)/points}=\text{Frequency}$



## EX.Setting

(1)From wave :

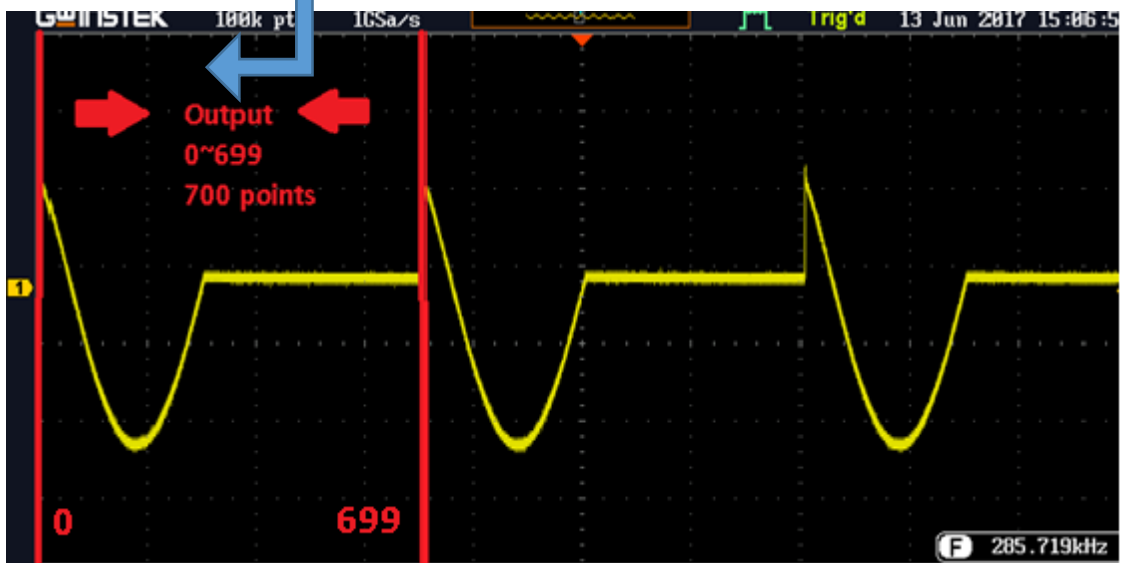
Start :200,length:500



(2)Output:

Start:0,length:700

0~699=700 Points



**Frequency = Sample Rate/Points=>200MHz/700Points=285.71**