

# PC Software

LCR-6300/6200/6100/6020/6002

---

## PC Software Guide

VERSION: 1.10



ISO-9001 CERTIFIED MANUFACTURER

**GW INSTEK**

This manual contains proprietary information, which is protected by copyrights. All rights are reserved. No part of this manual may be photocopied, reproduced or translated to another language without prior written consent of Good Will company.

The information in this manual was correct at the time of printing. However, Good Will continues to improve products and reserves the right to change specifications, equipment, and maintenance procedures at any time without notice.

**Good Will Instrument Co., Ltd.**

**No. 7-1, Jhongsing Rd., Tucheng Dist., New Taipei City 236, Taiwan.**

# T ABLE OF CONTENTS

INTRODUCTION.....	4
SETUP.....	5
Connection .....	5
Installation .....	6
Uninstallation.....	7
Configuration .....	7
MEASURE.....	10
LIST MEAS/LIST SETUP .....	13
SWEEP GRAPH.....	19
ABOUT .....	25

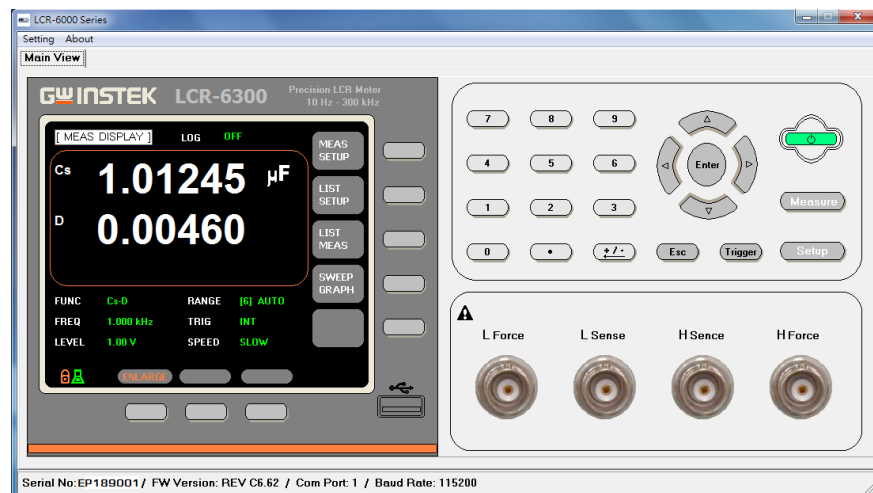
# INTRODUCTION

This manual is suitable for all models in the LCR-6000 Series. The LCR-6000 PC Software Guide describes how to use the PC software on Windows OS based computers (Windows XP, Windows 7 supported).

This manual consists of the following chapters:

- Setup: Installation, Connection, Uninstallation, Configuration
- Measurement: Displaying, recording measurement values and setting measurement parameters.
- LIST MEAS/LIST SETUP: Setting List Measurement parameters, executing List Measurement and logging List Measurement results.
- SWEEP GRAPH: Displaying and recording swept graphs.

## Software Overview



# SETUP

## Connection

Before initiating the PC connection between the PC software and a LCR-6000, first set and confirm the RS-232/USB settings on the LCR-6000.

In terms of RS-232 connection, use a 9-pin female to 9-pin female null modem cable such as GW Instek's GTL-232 to connect the LCR-6000 to the PC.

In terms of USB connection, use a Type A-B USB cable such as GW Instek's GTL-246 to connect the LCR-6000 to the PC.

Configure the RS232/USB Baud rate & Communication Settings

1. Set the baud rate for RS-232/USB communication in SYSTEM\SYSTEM CONFIG page.
2. The baud rate is adjustable between 1200~115200.
3. Set TERMINATOR setting as LF.
4. Set the HAND SHAKE and ERROR CODE settings to OFF.
5. Set the RESULT setting to FETCH.



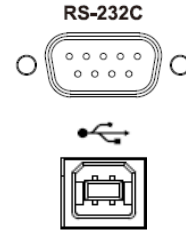
Note

Please see the user manual for setting details.



Connect the RS232/USB Cable

1. Connect the RS232/USB cable to the rear panel RS 232/USB terminal on the LCR.



2. Connect the other end of the RS232/USB cable to the PC side.
- 

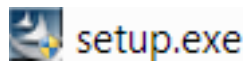
## Installation

The following describes how to install the LCR-6000 PC software on your PC.

---

Installing PC Software

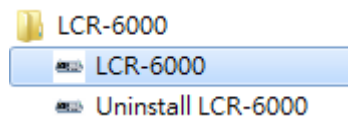
1. Go to the PC Software directory on the CD-ROM.
2. Click on setup.exe.



3. The installation wizard will start up. Follow the directions from the installation wizard. When choosing an install location it is recommended that the default location is chosen.

The default location for the software is  
C:\Program Files\LCR6000

A program icon should be available from the Start Menu.



4. After the installation has completed, a shortcut icon for the PC software will be added to your desktop.



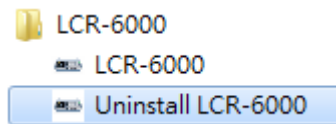
## Uninstallation

The following describes how to uninstall the LCR-6000 PC software from your PC.

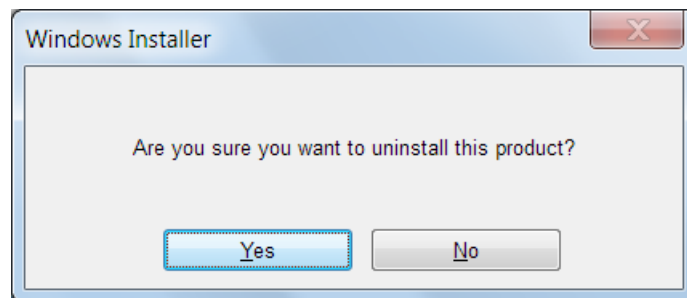
---

### Uninstalling the PC Software

1. From the Windows Start menu select the LCR-6000 program directory and choose Uninstall.



2. Select Y to uninstall the product. The dialogue box asks “Are you sure that you want to uninstall this product?”



3. The Uninstaller will automatically finish the uninstallation.

## Configuration

---

### Configure PC Software

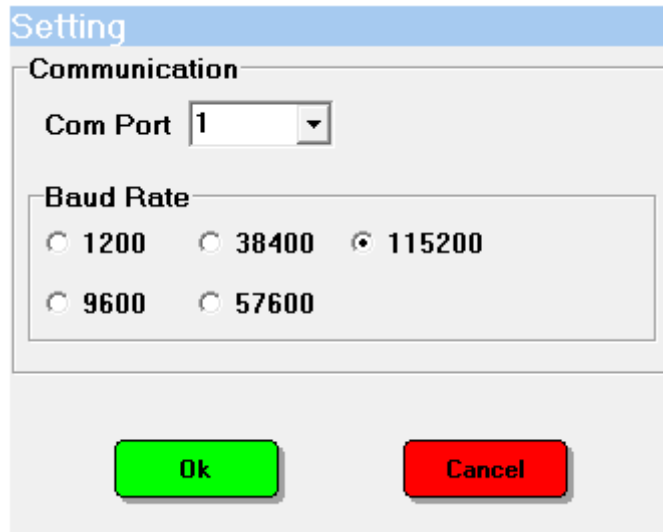
1. Activate the PC software.



2. Click on the Setting menu and open the setting dialog. Enter the default settings as detailed below.

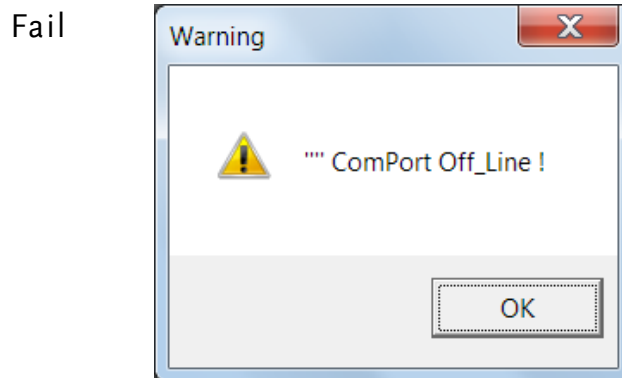


- Com Port: according to the Windows Device Manager
- Baud Rate: 115200 (The baud rate set here must be the same with what is set on the meter.)



- Click on the OK button. The PC software and the LCR-6000 will try to establish a connection (success), or an error message appears (fail). If the connection is successful, the windows header (title bar) for LCR-6000 PC software will display the com port and baud rate of the connection.

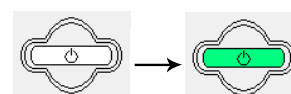
Success 



The possible reasons of connection failure:

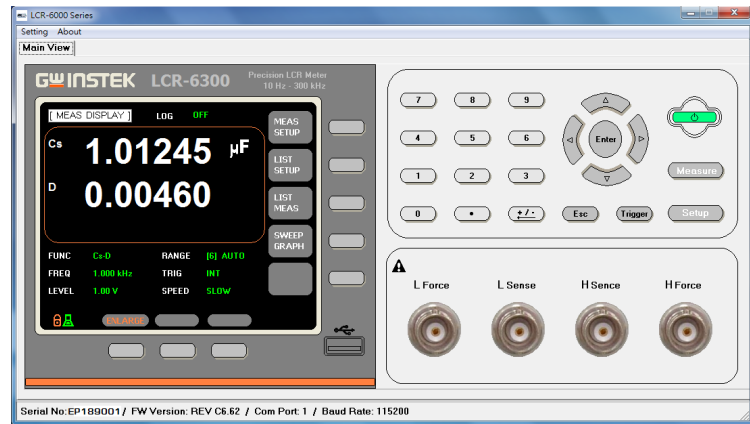
- Wrong COM port or baud rate settings.
- Wrong wiring in the RS-232 cable or the connectors of the RS-232 cable are not well connected.

- Move the cursor onto the Power icon and Click it to synchronize the PC software and the LCR meter.





- When the power icon turns green, it indicates that the PC software is now synchronized with the meter display.



- After the software and meter have synchronized, the measurement readings and settings from the meter will be displayed on the software display. For future reference, we will call these readings “synchronized parameters”.

The synchronized parameters include these items:

FUNC: Cs-D	RANGE: AUTO
FREQ: 1kHz	TRIG: INT
LEVEL: 1V	SPEED: SLOW
SRC RES:100Ω	AVG: OFF
BIAS: OFF	MON1: OFF
AUTO LCZ: OFF	MON2: OFF
DELAY: 0ms	
ALC: OFF	

 **Note**

The buttons on the LCR meter will be automatically locked and disabled after the PC connection is initiated.

The two icons shown below will be shown on the bottom left corner of the LCR meter’s display to indicate that the meter is connected to the PC and is in the key-lock state.



# M EASURE

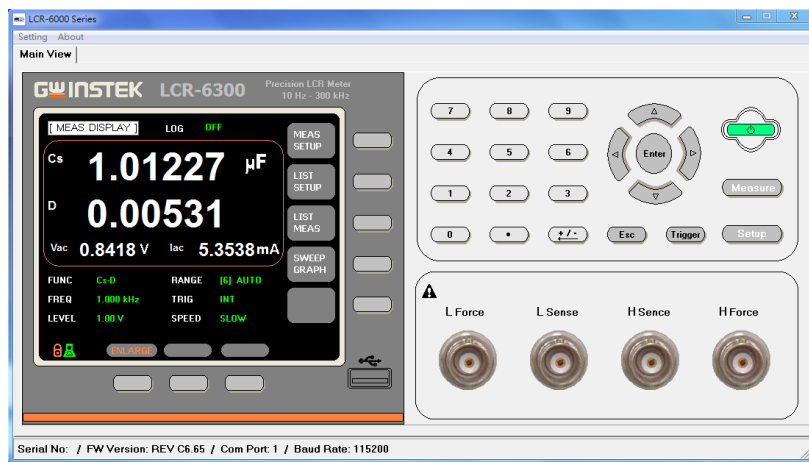
## Measurement Operations

Performing operations on the LCR-6000 PC software is basically the same as using the physical LCR meter, except that you use the mouse to click on the various icons instead of pressing a button with your finger. Please refer to the LCR-6000 user manual for the function of each measurement icon (button.)

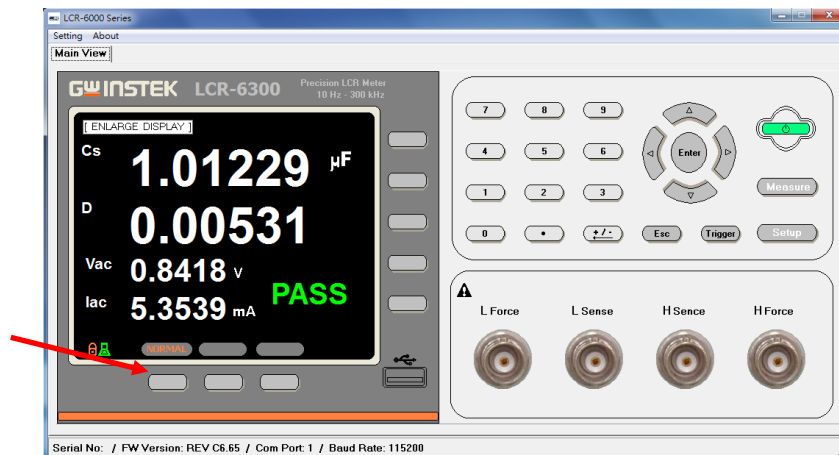
### Note

Before connecting the LCR meter to the software, remember to perform the OPEN TEST and SHORT TEST calibration first. The PC software doesn't have the ability to perform the Open/Short correction. These functions can only be performed on the meter itself.

## MEAS DISPLAY

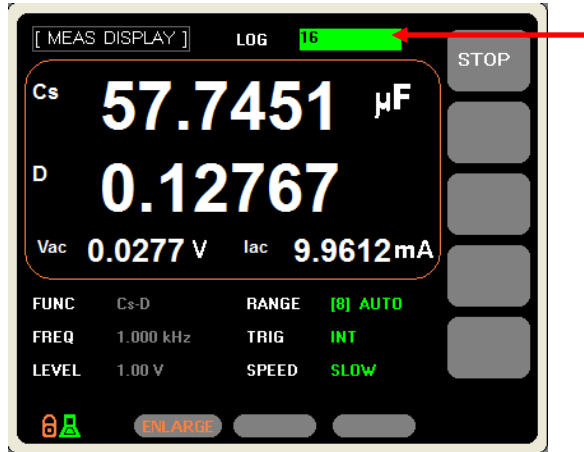


## ENLARGE DISPLAY



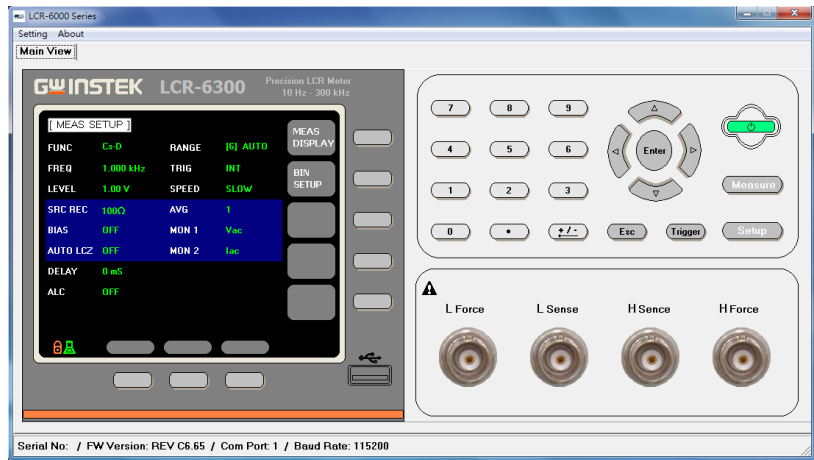
**LOG**

Unlike the other software functions, the log function differs from the meter's log function in that the pc software will save the log files to the PC's hard drive rather than to the meter's internal memory. The log files are saved in a txt file format to C:\LCR-6000\LiveMeasResult.



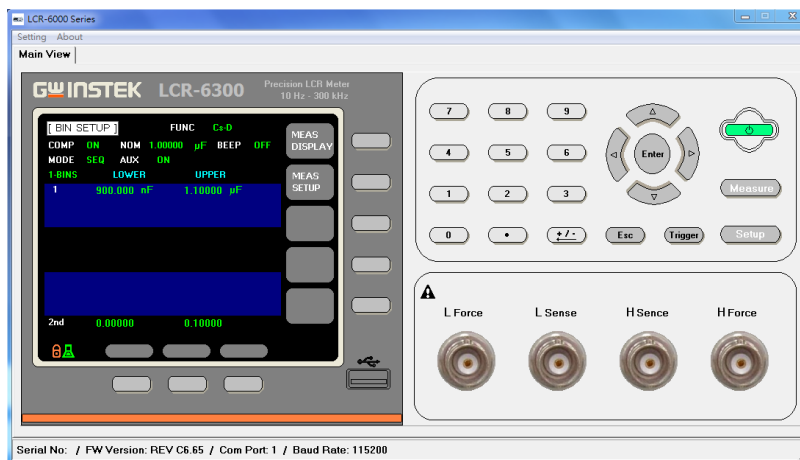
**SETUP**

Setting up the PC software is the same as setting up the LCR meter.



**BIN SETUP**

Setting up the PC software is the same as setting up the LCR meter. Only set 1-BINS for PASS/FAIL judgment.



# LIST MEAS/LIST SETUP

The LIST measurement mode on LCR-6000 meter provides maximum 10 list measurement steps, which share one common, variable measuring condition that is selected from these three measuring conditions: Vac (LEVEL V,) Iac (LEVEL A) or frequency.

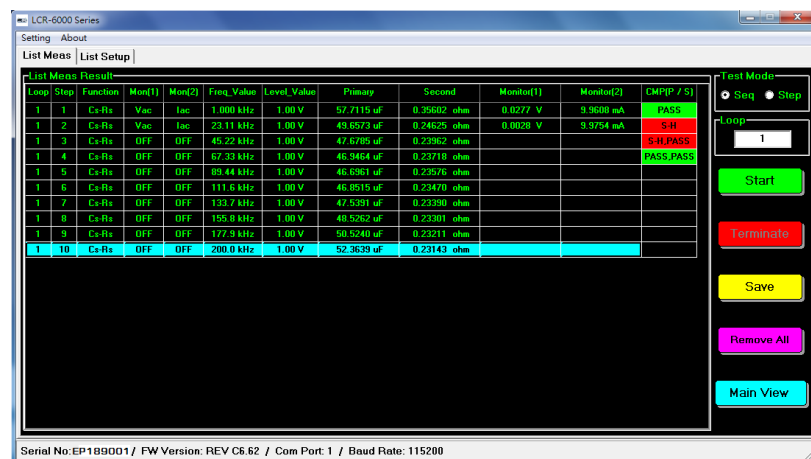
The PC Software's list setup allows a maximum of 1000 list measurement steps. Each step can be programmed and measured with a variety of measuring conditions to facilitate diverse measurements.

Display LIST Measurement

Use the cursor to click the LIST SETUP or LIST MEAS icons on the main display of the PC software to enter the LIST measurement function.



List Measurement Function Environment



Please refer to the LCR-6000's user manual for explanations of the test results from the LIST measurement.

CMP: Comparison measurement using a standard value and a tolerance range.



PASS: The measured value falls inside the tolerance range.

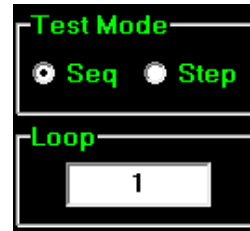
P-H/L: The primary measurement value falls outside the tolerance range.

S-H/L: The secondary measurement value falls outside the tolerance range.

Test Mode: Test mode selection for LIST measurement.

Seq: Measure all the listed, test steps in one sweep.

Step: Every time when the Start icon is clicked one step in the list will be tested (sequentially); the measurement finishes when all the listed steps are tested. You can click on the Terminate button to stop and quit the Step test mode during the test.



Loop: Loop is used to set the maximum sweep count for all the listed steps; the maximum settable value is 1000.

---

**Main View**

Click on this icon to quit the LIST measurement environment and return to the main display.



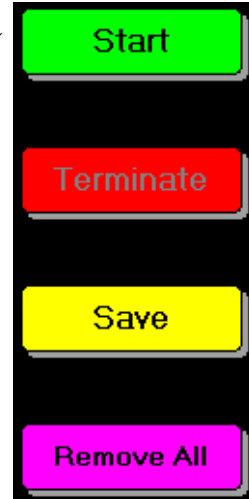
List Meas:  
Functional Icons  
in the LIST  
Measurement  
Function.

Start: Click on the Start icon to start a test.

Terminate: Click on the Terminate icon to stop the test in this measurement mode.

Save: Click on the Save icon to save the test result to the PC's hard drive. The test result will be saved as a txt file to C:\LCR-6000>ListMeasResult

Remove All: Click the Remove All icon to clear and remove all the test results.



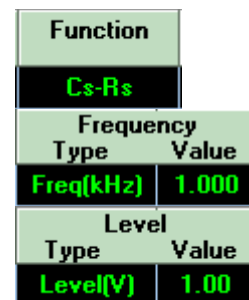
**List Setup**



Function: Click on the Function icon to choose the primary and secondary measurement parameters in the pull down menu.

Frequency: Use the Frequency settings to set the unit and value of the frequency of the measuring signal. (kHz).

Level: Use the pull down menu in the Level settings to choose to set the unit and value of the voltage or current of the measuring signal, e.g., V, mA.



Limit: Set the parameters for the comparison measurement here.

Primary: Compare the primary measurement value.

Second: Compare the secondary measurement value.

Both: Compare both the primary & secondary measurement values.

OFF: Don't compare.

Limit	
Type	Mode
Primary	SEQ
Second	SEQ
Both	SEQ
Both	SEQ
OFF	

You need to key in the tolerance range (or upper and lower values) for the parameters that you chose to compare with in the Limit settings.

Unit	Primary Lower	Primary Upper
uF	50.0000	70.0000
Unit	Second Lower	Second Upper
ohm	0.01000	0.10000

You can designate two parameters to be monitored during the test.

Mon1	Mon2
Vac	Iac

 **Note**

List Setup has a maximum of 1000 test steps.

**List Setup  
Function Keys**

Open: Open a previously saved LIST setup file.



Save: Save the current LIST setup in a file. The location of the saved LIST file is:



C:\LCR-6000>ListSetup

New: Clear the current contents of the LIST setup.



Settings for the LIST Sweep test.





Please refer to previous sections for any setting items that have been previously explained.

Sweep Type: Designate the type of sweep: frequency or amplitude (voltage or current).

Set the conditions, parameters and range for the LIST sweep test.

Start: The starting value of the selected variable parameter.

End: The stop value of the selected variable parameter.

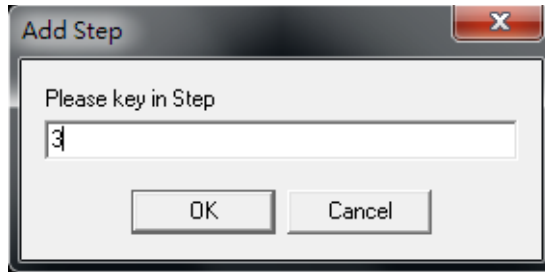
Point: Designate the number of steps in a LIST sweep test.

Destination: Destination step for step insertion.

Front/Back: This will insert all the steps from the sweep before/after the step number that is designated.

For example, if you programmed a LIST sweep to have a measuring frequency from 1~200kHz in 12 consecutive LIST steps, these twelve LIST sweep steps will be created (inserted) before the 1st step if you set the Destination step number to be '1.'

Add step is used to append new, blank test steps after the current, last step. An "Add Step" dialogue box will be shown so you can key in how many steps need to be appended.



Copy step is used to copy the steps in between the Start and the End step and have these selected steps duplicated and inserted before the designated destination step.



Main View is used to quit the LIST setup environment and return to the main display of this PC software.



# SWEEP GRAPH

The Sweep Graph function gives a graphical representation of the measured readings from a sweep test. It's much easier for you to interpret the measured values of a sweep test when you can see how the characteristics of a DUT changes.

The Sweep Graph function provides up to two overlaid, swept curves which represent the characteristics of a DUT in two different aspects for you to observe, compare and understand.

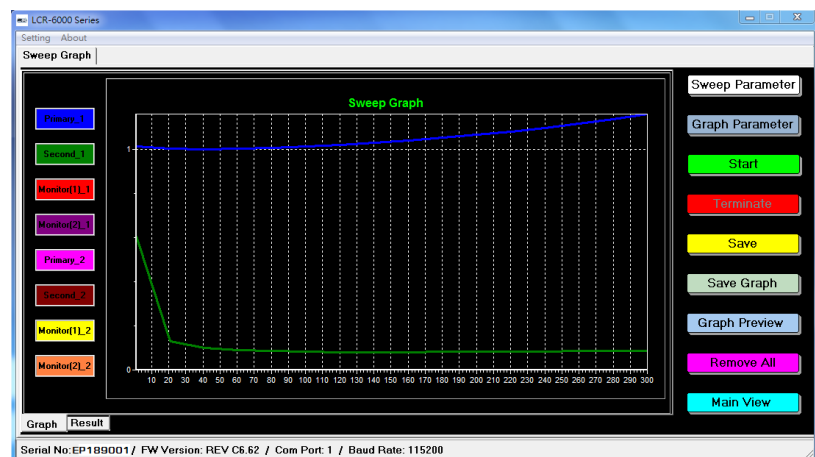
## SWEEP GRAPH Environment

Click on the Sweep Graph icon in the main display to enter the Sweep Graph environment.

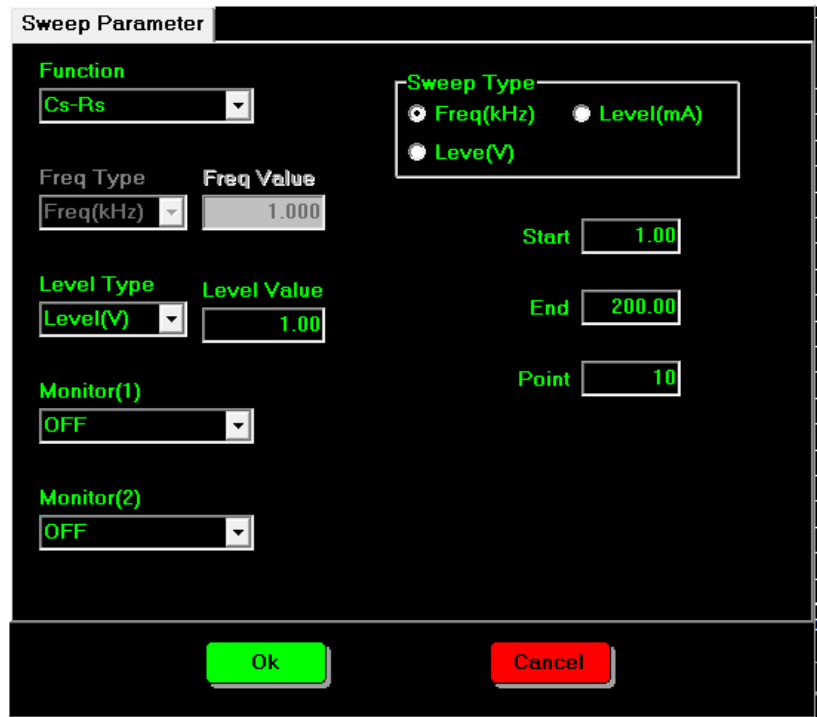


## Sweep Graph

Generates a graph of the measured values from a sweep test.



Sweep Parameter Set the measurement parameters for a Sweep Parameter sweep test.



For information on the function of each setting, please refer to previous explanations in this manual.

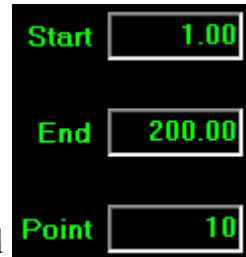
Sweep Type: Sweep Type is used to select what type of sweep is performed: frequency, voltage or current sweep.

Set the starting and ending values for the sweep range.

Start: Set the starting value here.

End: Set the ending value here.

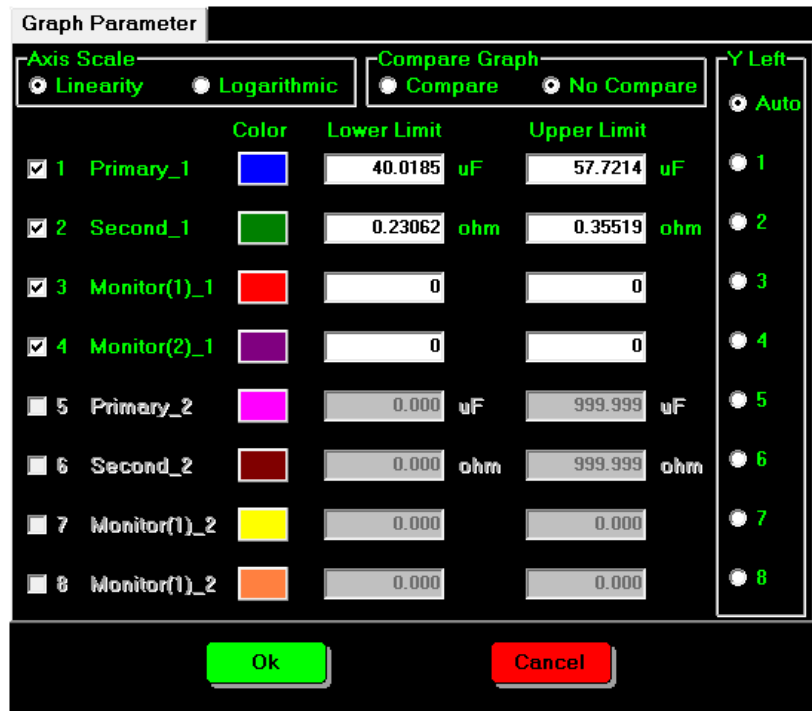
Point: Sets the number of points used in the sweep. Each point will be spaced out evenly over the sweep range(sweep range/#points).



For example, if you set Point = 10 and the sweep range is from 1kHz to 10kHz, then 10 steps will be created at 1, 2, 3, 4, 5, 6, 7, 8, 9 & 10kHz, over the full sweep range.

Graph Parameter Set the parameters for how you want the swept graphs displayed in the Graph Parameter settings.

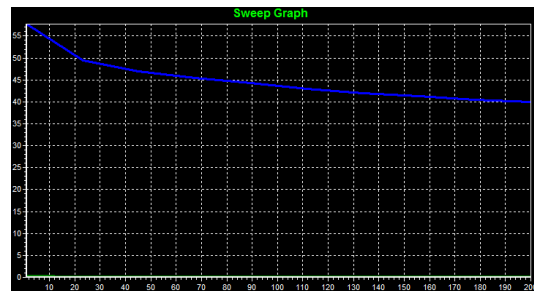
**Graph Parameter**



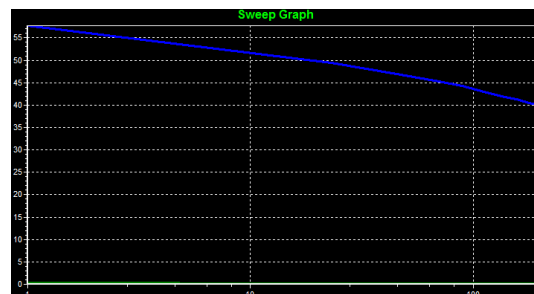
Choose the scale for the horizontal axis.



Linear



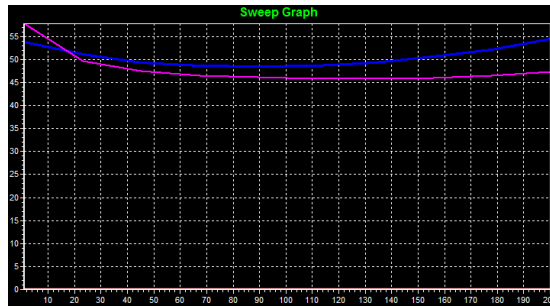
Logarithmic



Choose whether or not to overlay the graph of the current sweep with the previous sweep for comparative purposes. Choose Compare to have the graph overlaid.



This Compare function is convenient when you need to compare the differences between two different DUTs under the same test conditions.



**! Note**

As the Compare function can show only 2 swept graphs at the most, if Compare is activated and a third sweep test is conducted, then the swept graph of the first sweep test will be replaced by the third sweep test. If a fourth sweep test is conducted, then the swept graph of the 2nd sweep test will be replaced by the fourth sweep test and so on. The two graphs in the Compare mode are displayed in a FIFO (first-in-first-out) manner.

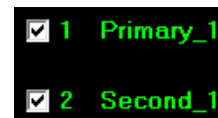
Select the scale for the Y axis here.

Auto: Select Auto to auto-fit the Y scale to contain the maximum and minimum values of all the shown graphs.

1-8: Select 1~8 to auto-scale Y axis according to the selected graph.



Graph display setting: up to 8 graphs can be shown at the same time; this setting can be used as a filter to deselect a graph from being drawn.



Color settings: Use this setting to choose the color of each graph.



Scale setting for Y axis: Each swept graph has its own default scale setting for the Y axis; this default Y scale setting is set by the PC according to the maximum and minimum values of the graph line automatically. However, you can still manually adjust (overwrite) the scale setting for the Y axis manually by modifying the default setting values. Note: Although every graph line has its own Y axis scale setting; the left Y scale activation selector decides which graph line's Y axis scale setting will be used as the activated scale setting for the Y axis of the overall sweep graph.

Lower Limit	Upper Limit
40.0185 uF	57.7214 uF

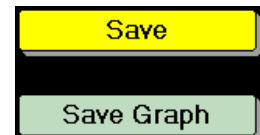
#### Icons for Controlling the Sweep Graph Function

Start: Click on the Start icon to start a sweep test.



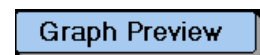
Terminate: Click on the Terminate icon to stop a sweep test.

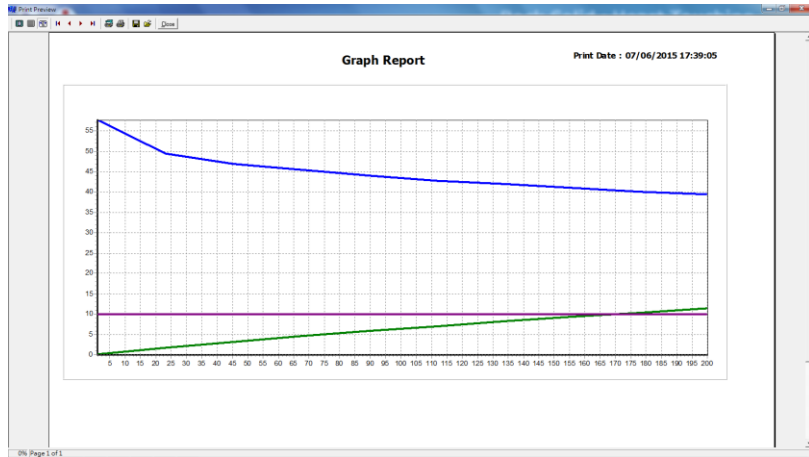
Save: Click on the Save icon to save the swept readings onto the PC in a txt file format.



Save Graph: Click on the Save Graph icon to save the sweep graph onto the PC as a BMP file to C:\LCR-6000\SweepGraphResult

Graph Preview: Click on Graph Preview to preview the graph before printing it out.





Remove All: Click on the Remove All icon to clear all the measurement settings and results of the Sweep Graph function.



Main View: Click the Main View icon to quit the Sweep Graph function and return to the main display.



Sweep Results

Click on the Result tab at the bottom left of the display in the Sweep Graph function to view the swept results as logged readings.

Step	Function	Freq(kHz)	Level(V)	Primary	Second	Monitor(1)_OFF	Monitor(2)_OFF
1	Cs-Rs	1000	1.00	1.01224 uF	0.09489 ohm		
2	Cs-Rs	20.93	1.00	1.00155 uF	0.12953 ohm		
3	Cs-Rs	40.87	1.00	999.932 uF	0.10103 ohm		
4	Cs-Rs	60.80	1.00	1.00160 uF	0.09030 ohm		
5	Cs-Rs	80.73	1.00	1.00581 uF	0.08516 ohm		
6	Cs-Rs	100.7	1.00	1.01189 uF	0.08268 ohm		
7	Cs-Rs	120.6	1.00	1.01953 uF	0.08155 ohm		
8	Cs-Rs	140.5	1.00	1.02866 uF	0.08123 ohm		
9	Cs-Rs	160.5	1.00	1.03940 uF	0.08138 ohm		
10	Cs-Rs	180.4	1.00	1.05147 uF	0.08183 ohm		
11	Cs-Rs	200.3	1.00	1.06517 uF	0.08249 ohm		
12	Cs-Rs	220.3	1.00	1.08048 uF	0.08325 ohm		
13	Cs-Rs	240.2	1.00	1.09750 uF	0.08431 ohm		
14	Cs-Rs	260.1	1.00	1.11620 uF	0.08533 ohm		
15	Cs-Rs	280.1	1.00	1.13632 uF	0.08652 ohm		
16	Cs-Rs	300.0	1.00	1.15958 uF	0.08769 ohm		



# ABOUT

This section describes how to view the version number of the software.

---

## View Software Version

You may need to check the version of the software to see if you have the latest version.

1. Start the PC Software.
2. On the main display window click the **About** menu tab to show the version number.

